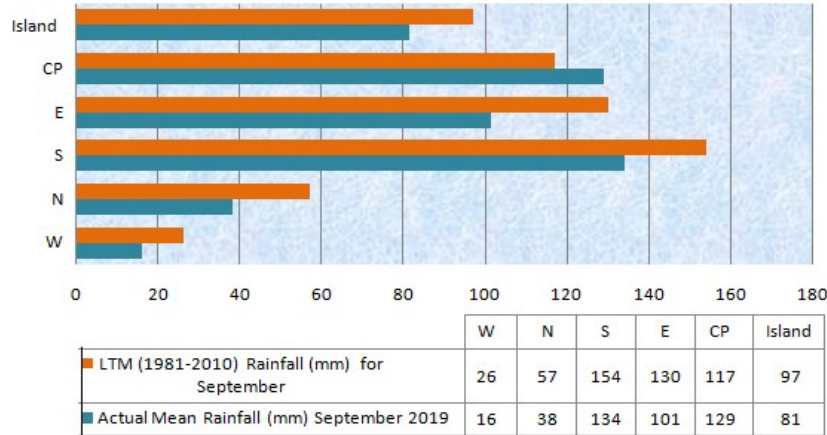


Mauritius Meteorological Services

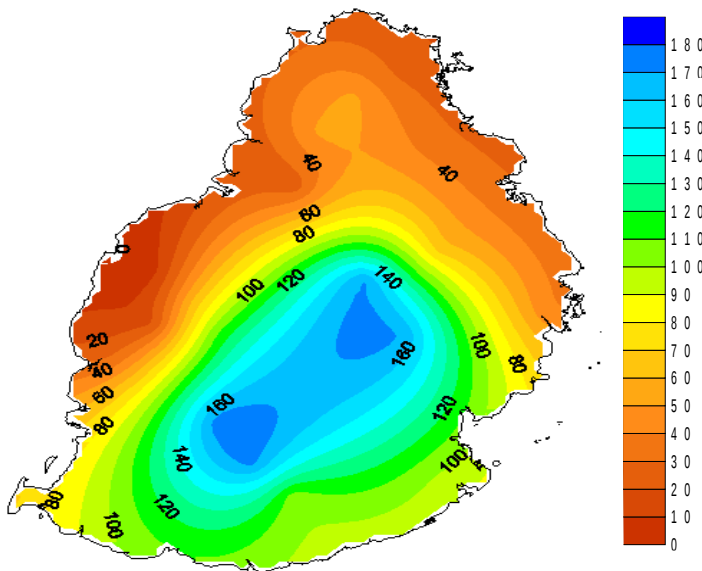
Mean Rainfall for 1-30 September 2019

Mauritius

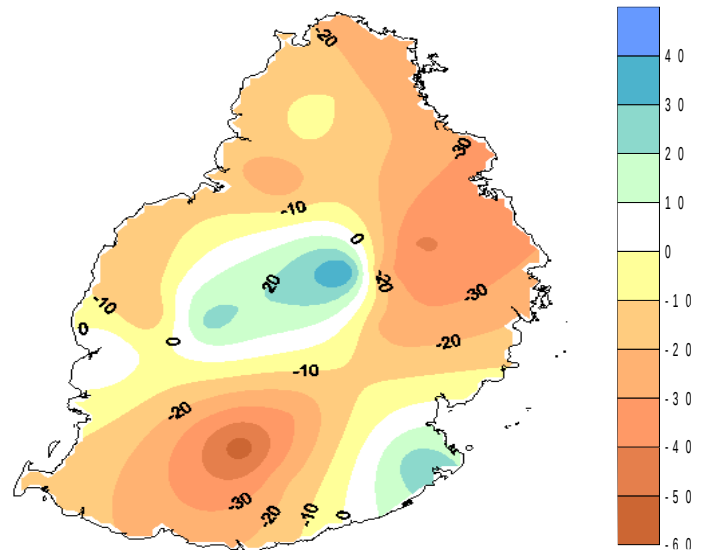
September 2019 received slightly below normal rainfall amounting to 81mm, representing 84% of the long term mean for this month. Almost all regions of the island had below normal rainfall, except the Central Plateau. Excess rainfall of above 20mm was observed locally in the regions of Plaisance, and Grand Providence whereas it was dry elsewhere.



Observed Rainfall(mm)



Rainfall Anomaly (mm)



Outer Islands

		Amount (mm)		
	Stations	Actual Mean Rainfall	LTM Rainfall	% of LTM
Rodrigues	Pointe Canon	26	51	51
	Plaine Corail	28	50	56
	Citronelle	38	94	40
	Agalega	62	48	129
	St Brandon	34	31	110

It was rather wet over Agalega. St.Brandon received slightly above normal rainfall for this month.

On the other hand, Rodrigues had well below normal rainfall representing 49% of the long term mean for this month.

Ram Dhurmea

For Director

14 October 2019